

RESOLUTION NO. 954

A RESOLUTION AUTHORIZING THE MAYOR AND CITY MANAGER OF THE CITY OF PRINEVILLE TO ACCEPT JURISDICTION OF A PORTION OF NE PETERS ROAD BETWEEN N. MAIN/MCKAY AND N.E. YELLOW PINE FROM CROOK COUNTY.

WHEREAS, The City has annexed or had petitions to annex, the majority of properties abutting NE Peters road between N. Main/McKay St & NE Yellowpine St;

AND WHEREAS, Crook County and City of Prineville desire to transfer jurisdiction of such road to the City;

AND WHEREAS, pursuant to the Urban Growth Boundary Agreement between the City Of Prineville and Crook County dated October 16, 2002, the City of Prineville agreed to assume responsibility for all County Roads within the city limits, after said roads have been improved to City road standards, except those standards related to curbs and sidewalks;

AND WHEREAS, Crook County under took efforts in September 2002 and September 2003 to make improvements to Peters Road to add a turn lane, safety guard rail and widening to bring it to City road standards except for curbs and sidewalks;

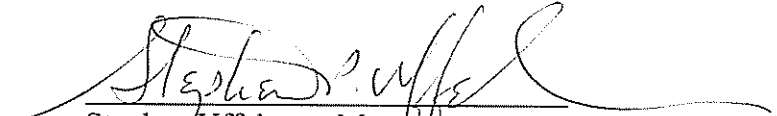
AND WHEREAS, with the assistance of the Crook County Road Master and other research, the City has determined the legal description of said roadway it will assume jurisdiction of;

AND WHEREAS, by Order No. 2003-69 on August 6th, 2003 (MF 182634), the Crook County Court offered, authorized and ordered relinquishment of jurisdiction of said portion of NE Peters Road to the City of Prineville.

NOW THEREFORE, BE IT RESOLVED by the City Council of the City of Prineville that the City of Prineville accepts jurisdiction of the portion of NE Peters Road between N Main/McKay Road and NE Yellow Pine Road as depicted on Exhibit "1" attached here to, including all previous easements granted for transportation or public utility purposes.

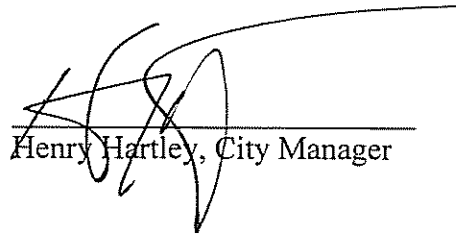
Approved by the City Council this 11th day of November, 2003.

Signed by the Mayor this 11th day of November, 2003.



Stephen Uffelman, Mayor

ATTEST:



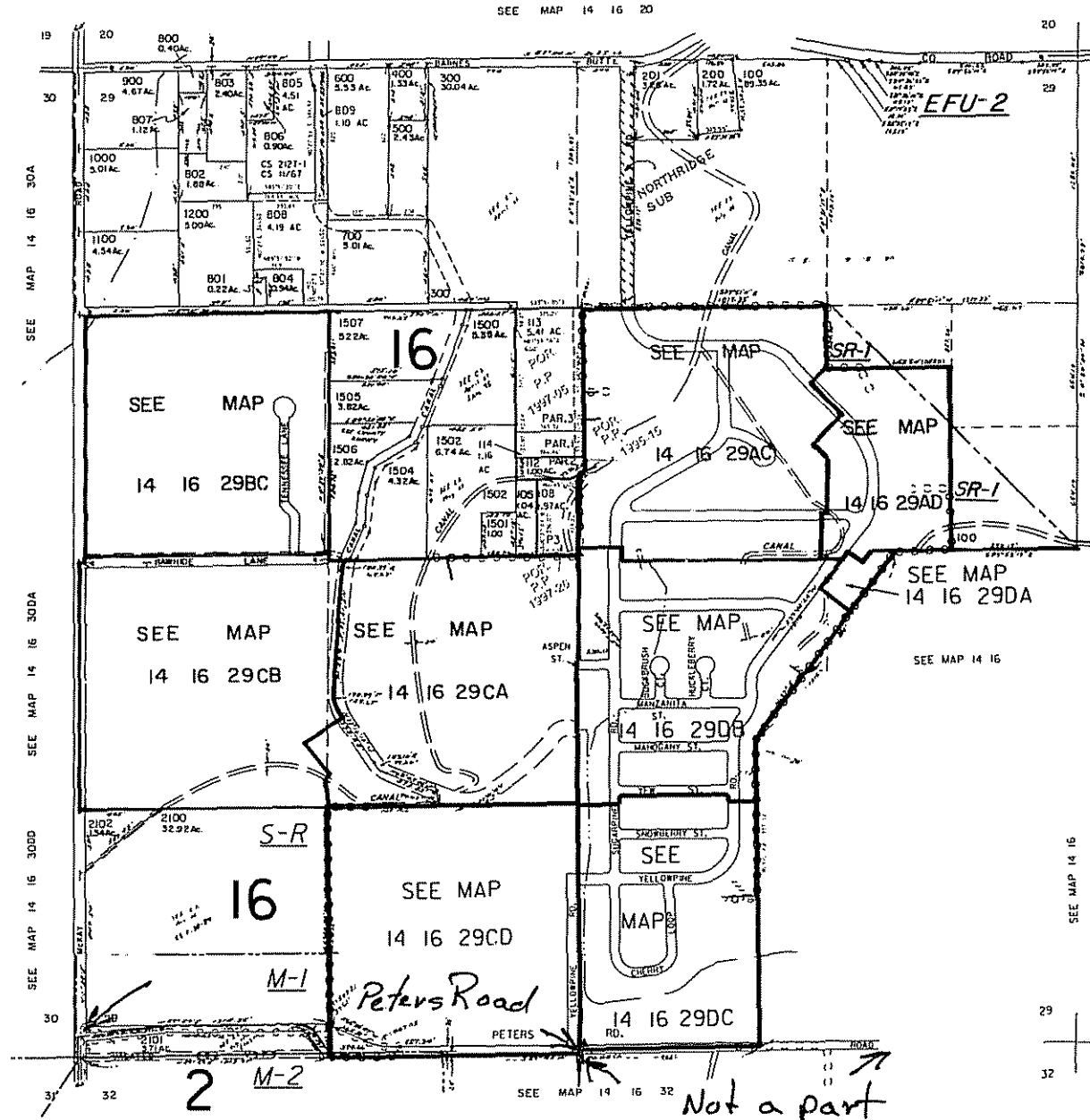
Henry Hartley, City Manager

THIS MAP WAS PREPARED FOR
ASSESSMENT PURPOSE ONLY

SECTION 29 T.14S. R.16E. W.M.
CROOK COUNTY
1" = 400'

14 16 29
& INDEX
PRINEVILLE

CANCELLED NO.
101 THRU 104
106
107
109 THRU 111
115
120
1301
1300
1400 THRU 1409
1503
1508
1509
1600 THRU 1605
1700 THRU 1704
1800
1900
2000
2200 THRU 2203



SEE MAP 14 16 28
SEE MAP 14 16 28

29 28 Revised
10/9/2003. 9C
14 16 29
& INDEX
32 33 PRINEVILLE

Exhibit 1