

RESOLUTION NO. 898

A RESOLUTION AMENDING RESOLUTION NO. 765
IN THE MATTER OF THE ANNEXATION OF CERTAIN PROPERTIES
TO THE CITY OF PRINEVILLE IDENTIFIED AS THE FLOREINE HUDSPETH
PROPERTY AND FURTHER DESCRIBED AS A PORTION OF TAX LOT NO.100
IN SECTION 32, T14S, R16E

IT IS HEREBY RESOLVED by the Prineville City Council as follows:

1. The Council specifically finds that:

(a) The when the subject properties were officially annexed by Resolution No. 765 in January of 1994 said properties were only identifiable by general description as a being a portion of Tax Lot No. 100 of Section 32, T14S, R16E; i.e. The NW ¼ of the NE ¼ and the NW ¼ of the SW ¼ of the NE ¼ of said Section 32, T14S, R16E;

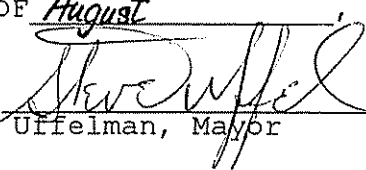
(b) Subsequently thereto, when the actual survey of the subject properties were completed, it was found that the actual properties being annexed should have been described as follows:

"A portion of Tax Lot No. 100 of Section 32, T14S, R16E, described as the NW¼ of the NE¼, the NW¼ of the SW¼ of the NE¼, that portion of the westerly 388.19 feet m/l of the SE¼ of the NE¼ currently located outside the City, that portion of the westerly 382.02 m/l feet of the NE¼ of the SE¼ currently located outside the City, and the westerly 382 feet m/l of the NW¼ of the SE¼ of the SE¼ of said Section 32, T14S, R16E; Said properties are also identified as the NW¼ of the NE¼, and Parcels No.s 1, 2 and 4 of Partition Plat No. 1997-02 as recorded in the County Clerks records of Crook County, Oregon.

THEREFORE, BE IT FURTHER RESOLVED by the Prineville City Council that Resolution No. 765 is hereby amended by revising the description of the subject "Hudspeth" properties annexed to the City of Prineville to read as set forth above and as shown on Exhibit "A" of this Resolution. Further, Resolution No. 765 is hereby amended to rezone the subject properties as set forth on Exhibit "B" to this Resolution.

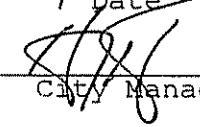
APPROVED BY THE CITY COUNCIL ON THE 28th DAY OF August, 2001.

APPROVED BY THE MAYOR ON THE 28th DAY OF August, 2001.


Steve Uffelman, Mayor

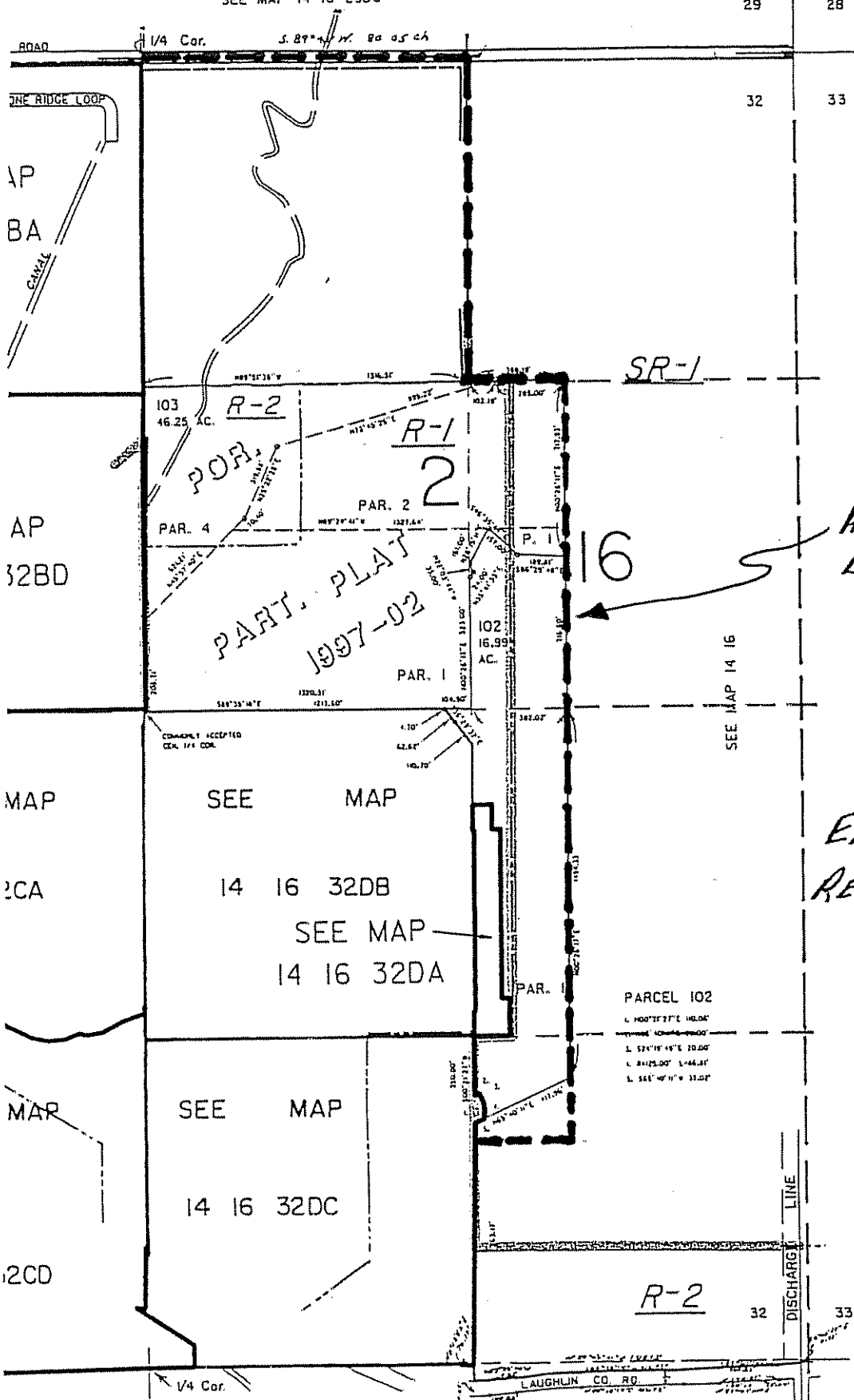
ATTEST:

8/28/01
Date


City Manager

SEE MAP 14 16 290C

29 28



CANCELLED NO.

- 100
- 101
- 104
- 105
- 106
- 200
- 201
- 202
- 301A1
- 306
- 309
- 310
- 311
- 300
- 307
- 308
- 304

ANNEXATION BOUNDARY

*EXHIBIT "A"
RESOLUTION
NO. 898*

SEE MAP 14 16

SEE MAP 14 16 33CC

15 16 58A

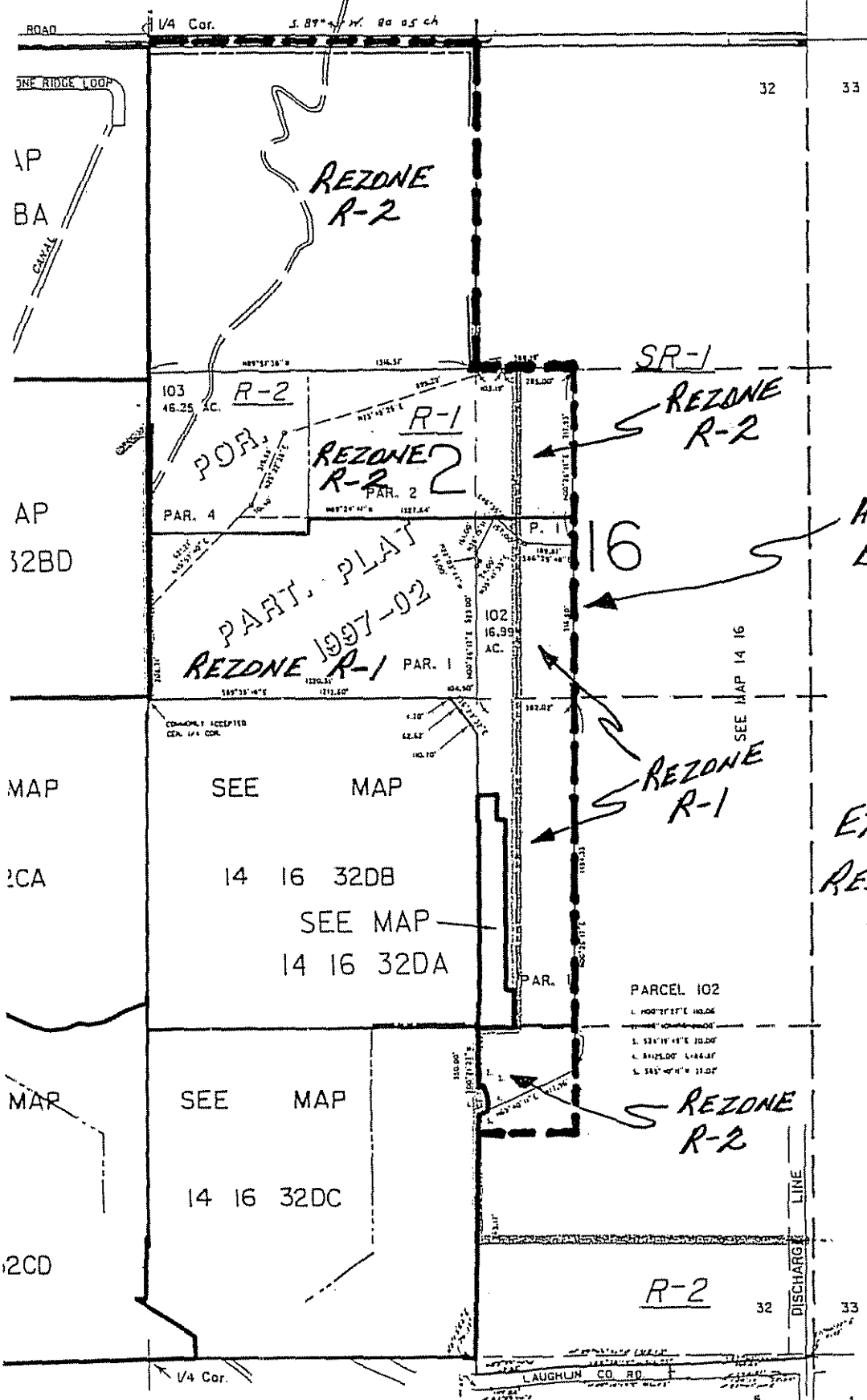
SEE MAP 15 16 5A

14 16 32
& INDEX
PRINEVILLE

SEE MAP 14 16 29DC

29

28



- CANCELLED NO.
- 100
 - 101
 - 104
 - 105
 - 106
 - 200
 - 201
 - 202
 - 301A1
 - 306
 - 309
 - 310
 - 311
 - 300
 - 307
 - 308
 - 304

ANNEXATION BOUNDARY

EXHIBIT "B" RESOLUTION NO. 898

SEE MAP 14 16 33CC

15 16 58A

SEE MAP 15 16 5A

14 16 32 & INDEX PRINEVILLE