

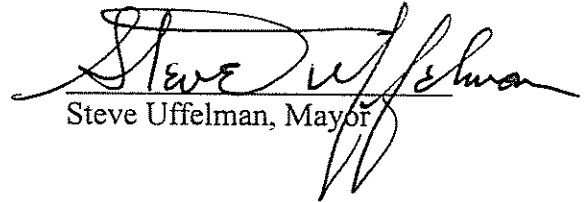
RESOLUTION NO. 878
A resolution naming SW Piper Way

The Common Council of the City of Prineville finds that:

1. A private unnamed road located in the center of Lot 22 of Balwin Industrial Park located in the NW 1/4 of Section 12, T15S, R15E, of the Willamette Meridan in Crook County, Oregon as created by Land Partioning Plat 1997-19 according to the official plat thereof on file and of record in the office of the County Clerk for Crook County, Oregon.
2. Such roadway is unplatted and, therefore, unnamed.
3. Abutting property owners have been contacted and have no objection to such roadway being named SW Piper Way.

BASED UPON the above findings, it is hereby resolved by the Common Council of Prineville, Oregon, that the above described roadway is hereby named SW Piper Way.

Dated February 13th, 2001


Steve Uffelman, Mayor

Attest



City Recorder

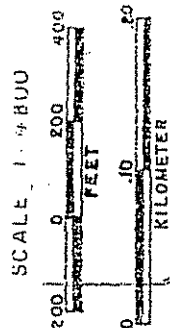
NW1/4 SECTION 12, T.15S., R.15E. W.M.
CROOK COUNTY

15 15 12B

SW

THIS MAP WAS PREPARED FOR
ASSESSMENT PURPOSE ONLY

SCALE = 200'
SEE MAP 15 15

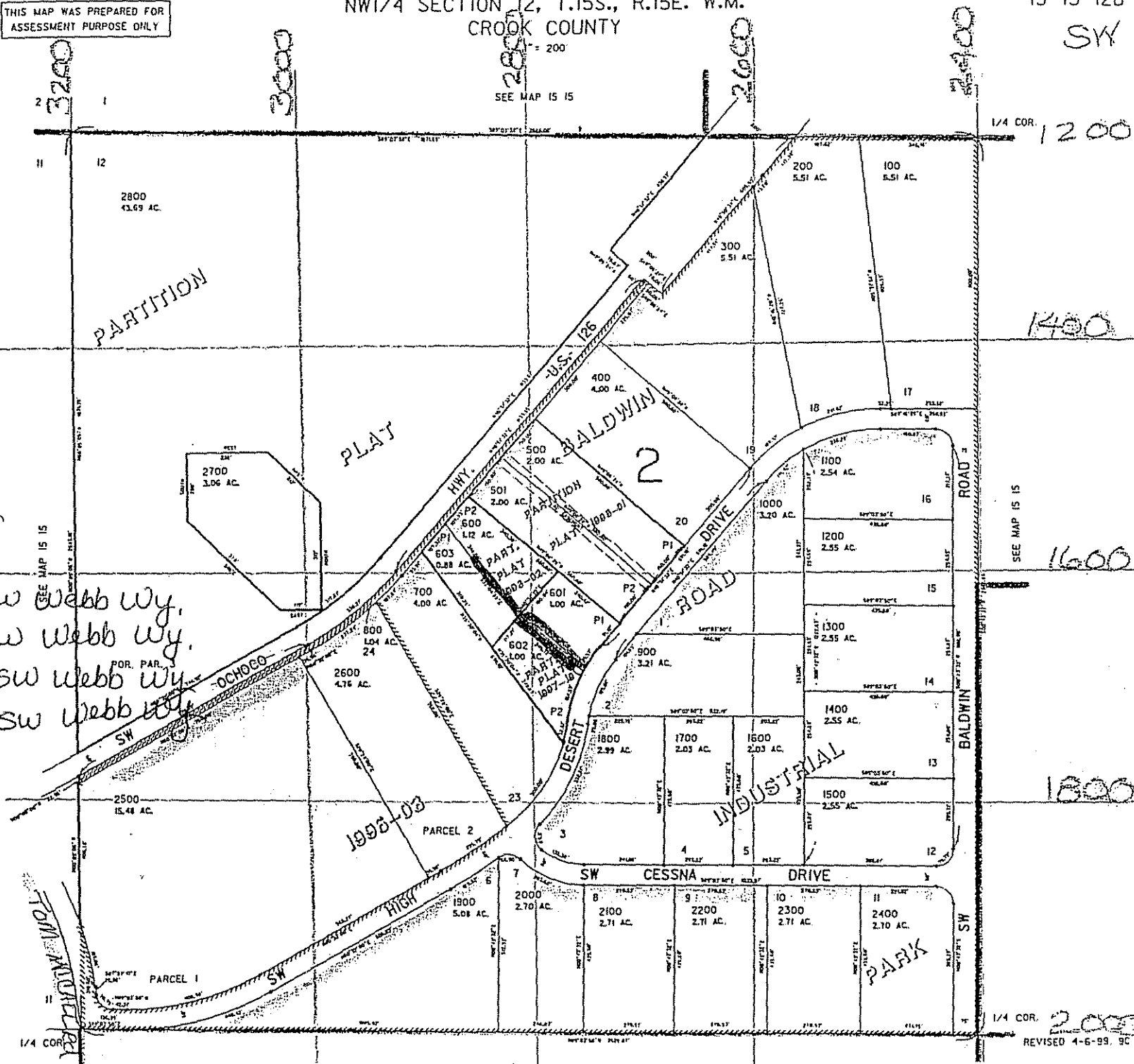


PARTITION

PLAT

Webb Way

- TL 600-1566 SW Webb Wy.
- TL 601-1600 SW Webb Wy.
- TL 602-1633 SW Webb Wy.
- TL 603-1577 SW Webb Wy.



SEE MAP 15 15

1/4 COR.

REVISED 4-6-99, 9C

SEE MAP 15 15