

RESOLUTION NO. 859

A RESOLUTION ANNEXING CERTAIN PROPERTIES INTO THE
CITY OF PRINEVILLE AND REZONING SAID PROPERTIES

IT IS HEREBY RESOLVED by the Prineville City Council as follows:

1. The Council specifically finds that:

(a) Those properties identified as Tax Lot 300 of Crook County Assessor's Map 14-15-36-Index, Tax Lot 900 of Assessor's Map 15-16-4AA, Tax Lot 4900 of Assessor's Map 15-16-4B, Tax Lot 1900 of Assessor's Map 15-16-4AB, Tax Lot 100 of Assessor's Map 14-15-36AA, Tax Lot 1402 of Assessor's Map 14-15-25D, and Tax Lot 1501 of Assessor's Map 14-15-36-Index as shown on the maps attached as "Exhibits A through F-2" respectively to this resolution and as more specifically described in "Exhibit G" attached to this resolution are contiguous to the City of Prineville.

(b) All of the property owners and electors of said properties have duly petitioned the City for annexation and have thereby consented to such annexation.

(c) The City Planning Department has duly considered the subject annexation and rezoning issues, and has recommended annexation and certain rezoning of said properties in compliance with the Comprehensive Plan as shown on the maps attached as "Exhibits A through F-2."

2. The real properties described in "Exhibit G" to this resolution are hereby annexed into the City of Prineville with the boundaries as set forth in said "Exhibit G" to this resolution and as shown on the maps set forth in "Exhibits A through F-2" to this resolution.

3. The real properties identified in "Exhibits A through F-2" to this resolution are hereby rezoned to the respective City Zoning classifications as designated on the respective maps attached hereto as "Exhibits A through F-2".

APPROVED BY THE CITY COUNCIL ON THE 28th DAY OF March 2000.

APPROVED BY THE MAYOR ON THE 28th DAY OF March 2000.

Ann Graf
Ann Graf, Mayor

ATTEST:

[Signature]
Henry Hartley, City Manager

3/29/00
Date

EXHIBIT "A"

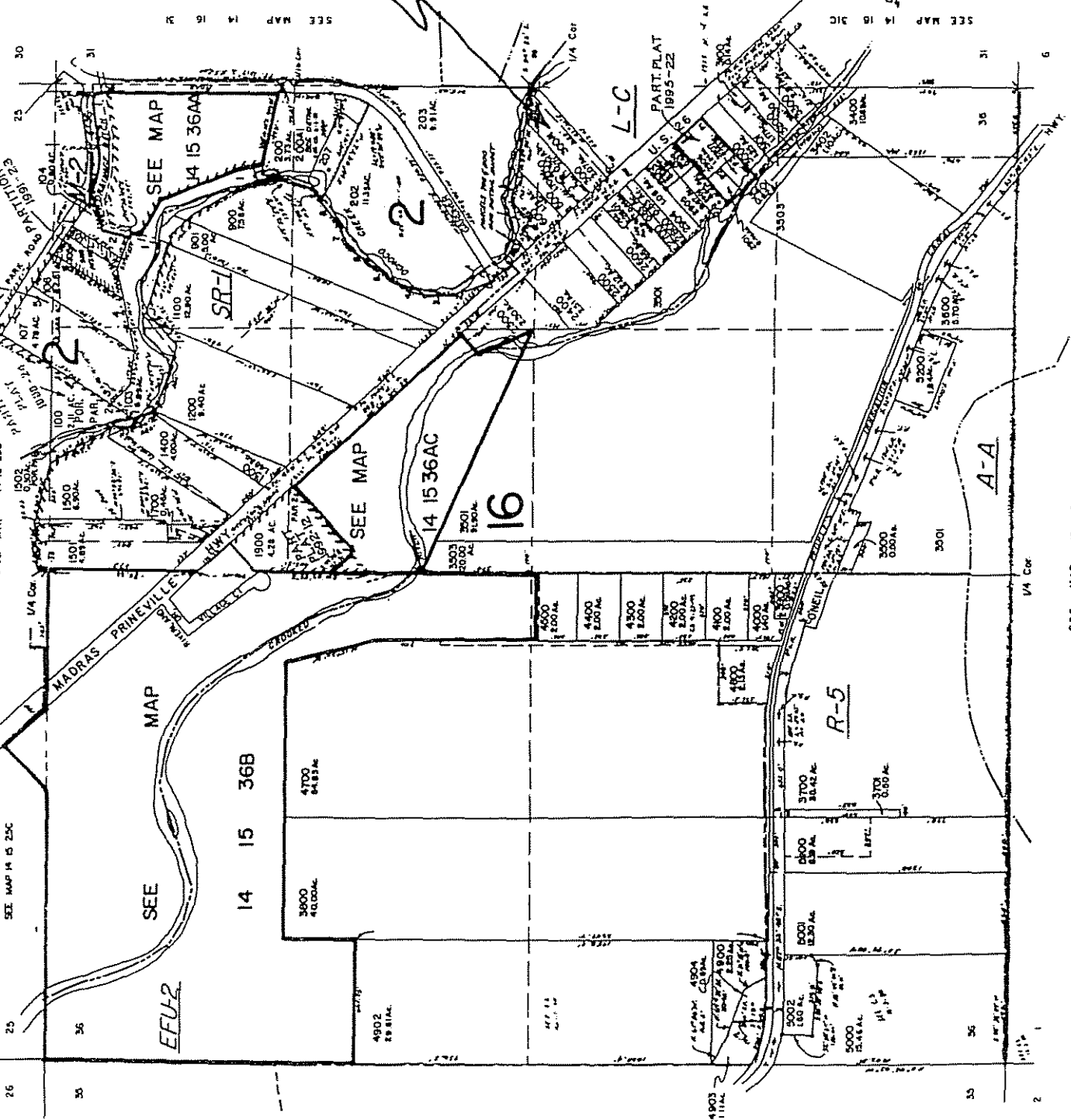
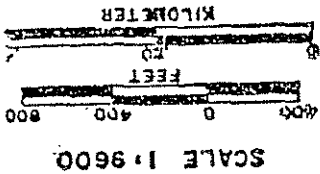
INULVA
 15 36
 + INDEX

CASH	
101	100
102	101
103	102
201	204 THRU 205
501	500
1000	1600
1701	1701
1702	1600 THRU 1606
1901	1901, 1902
1999	
2000	
2100 THRU 2102	
2200	
2301	
3200A1	
3504	
360001 THRU 360004	
4600 THRU 4602	
4901	

SUBJECT
 TAX LOT
 300
 REZONE C-2

Numbers of last two
 ounces only

CRICK COUNTY
 1" = 400'



SEE MAP 14 15 25C

SEE MAP 14 15 25D

SEE MAP 14 15 25E

SEE MAP 14 15 25F

SEE MAP 14 15 25G

SEE MAP 14 15 25H

SEE MAP 14 15 25I

SEE MAP 14 15 25J

SEE MAP 14 15 25K

SEE MAP 14 15 25L

SEE MAP 14 15 25M

SEE MAP 14 15 25N

SEE MAP 14 15 25O

SEE MAP 14 15 25P

SEE MAP 14 15 25Q

SEE MAP 14 15 25R

SEE MAP 14 15 25S

SEE MAP 14 15 25T

SEE MAP 14 15 25U

SEE MAP 14 15 25V

SEE MAP 14 15 25W

SEE MAP 14 15 25X

SEE MAP 14 15 25Y

SEE MAP 14 15 25Z

SEE MAP 14 15 251

SEE MAP 14 15 252

SEE MAP 14 15 253

SEE MAP 14 15 254

SEE MAP 14 15 255

SEE MAP 14 15 256

SEE MAP 14 15 257

SEE MAP 14 15 258

SEE MAP 14 15 259

SEE MAP 14 15 250

INSERT
 1" = 200'

14 15 36
 & INDEX
 REVISED 4 23 91 9C

RECEIVED
 APR 27 1997
 DEPT. OF REVENUE
 STATE OF OREGON

SEE MAP 15 15

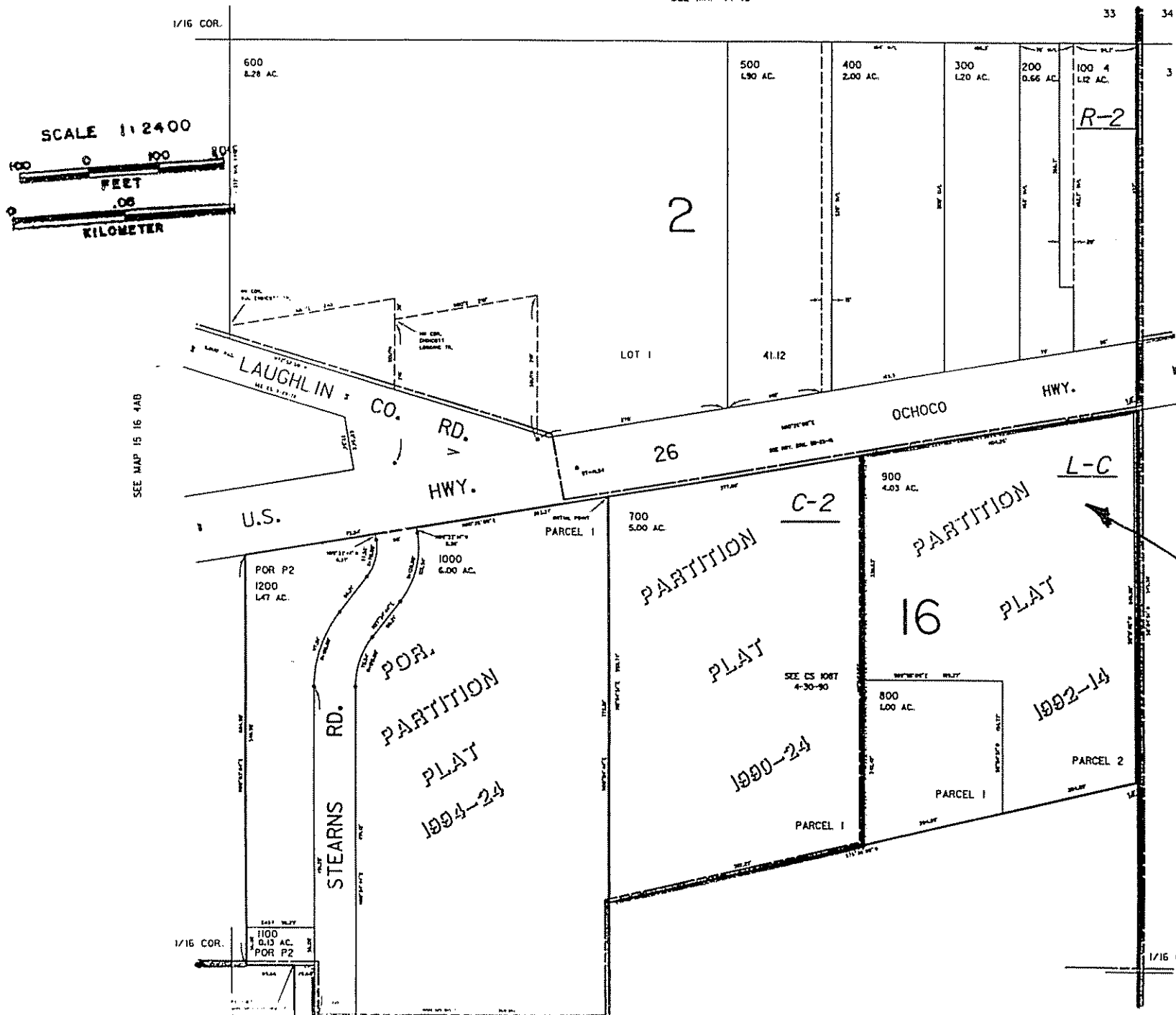
THIS MAP WAS PREPARED FOR
ASSESSMENT PURPOSE ONLY

NE1/4 NE1/4 S 4 T.15S. R.16E. W.M.
CROOK COUNTY

15 16 .A
PRINEVILLE

1" = 100'

SEE MAP 14 16



SEE MAP 15 16 3

SUBJECT TAX LOT 900
REZONE L-2

EX: BIT "B"

THIS MAP WAS PREPARED FOR
ASSESSMENT PURPOSE ONLY

NW1/4 SEC. 4 T. 15S. R. 16E. W. 4.
CROOK COUNTY
1" = 200'

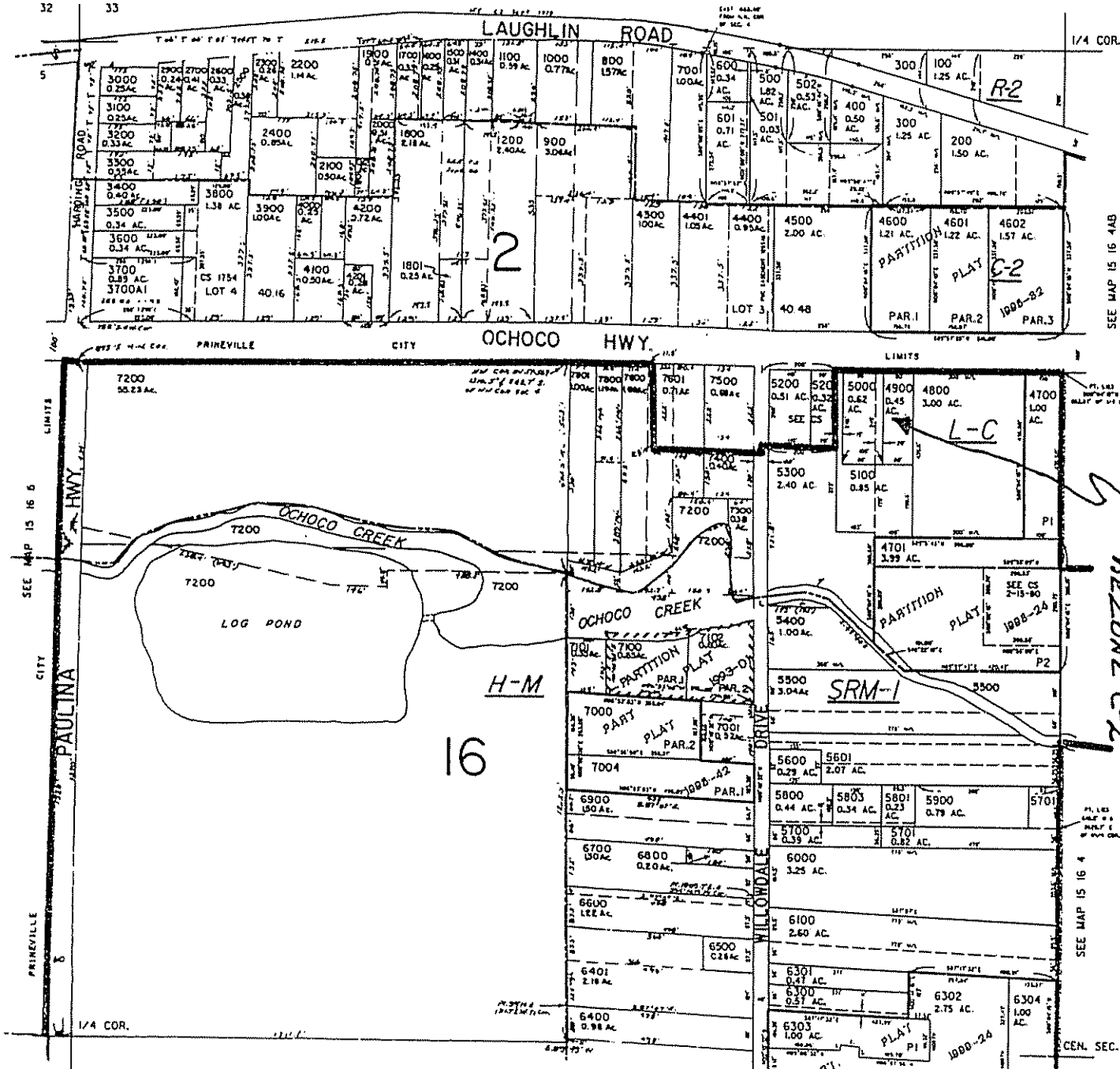
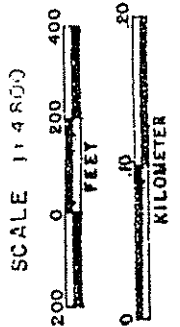
15 16 4B
PRINEVILLE

SEE MAP 14 16 33CC

SEE MAP 14 16 33

32

33



- CANCELLED NO.
- 101
 - 1300 THRU 1302
 - 1601
 - 6501
 - 6699
 - 7002
 - 7003
 - 7200A1
 - 7201
 - 7700

SEE MAP 15 16 4AB

SUBJECT TAX LOT 4900
REZONE C-2

EXL 9/7 '01

PARCEL 6303
1. IMPROVED
2. UNIMPROVED

SEE MAP 15 16 4C

CEN. SEC.

15 16 4B
PRINEVILLE

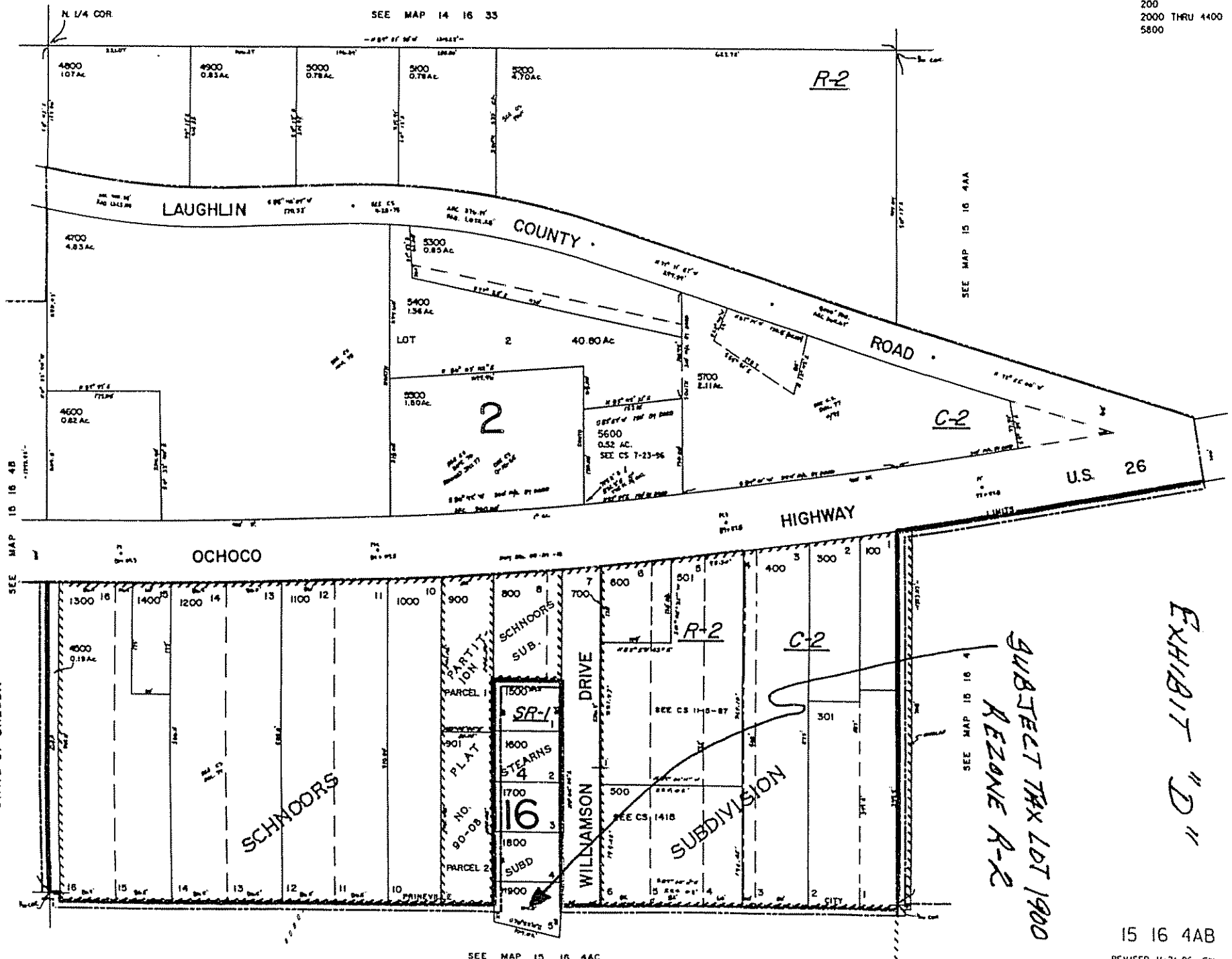
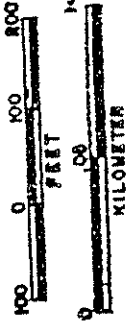
THIS MAP WAS PREPARED FOR ASSESSMENT PURPOSE ONLY

NW1/4 NE1/4 SEC.4 T.15S. R.16E. W.M.
CROOK COUNTY
1" = 100'

15 16 4AB

CANCELLED NO.
200
2000 THRU 4400
5800

SCALE 1:2400



RECEIVED
DEC 05 1996
DEPT. OF REVENUE
STATE OF OREGON

SUBJECT TAX LOT 1900
REZONE R-2

EXHIBIT "D"

15 16 4AB

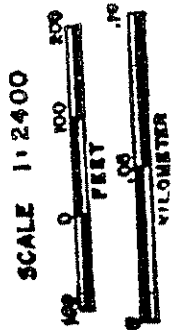
REVISED 11-21-96 CW

THIS MAP WAS PREPARED FOR
ASSESSMENT PURPOSE ONLY

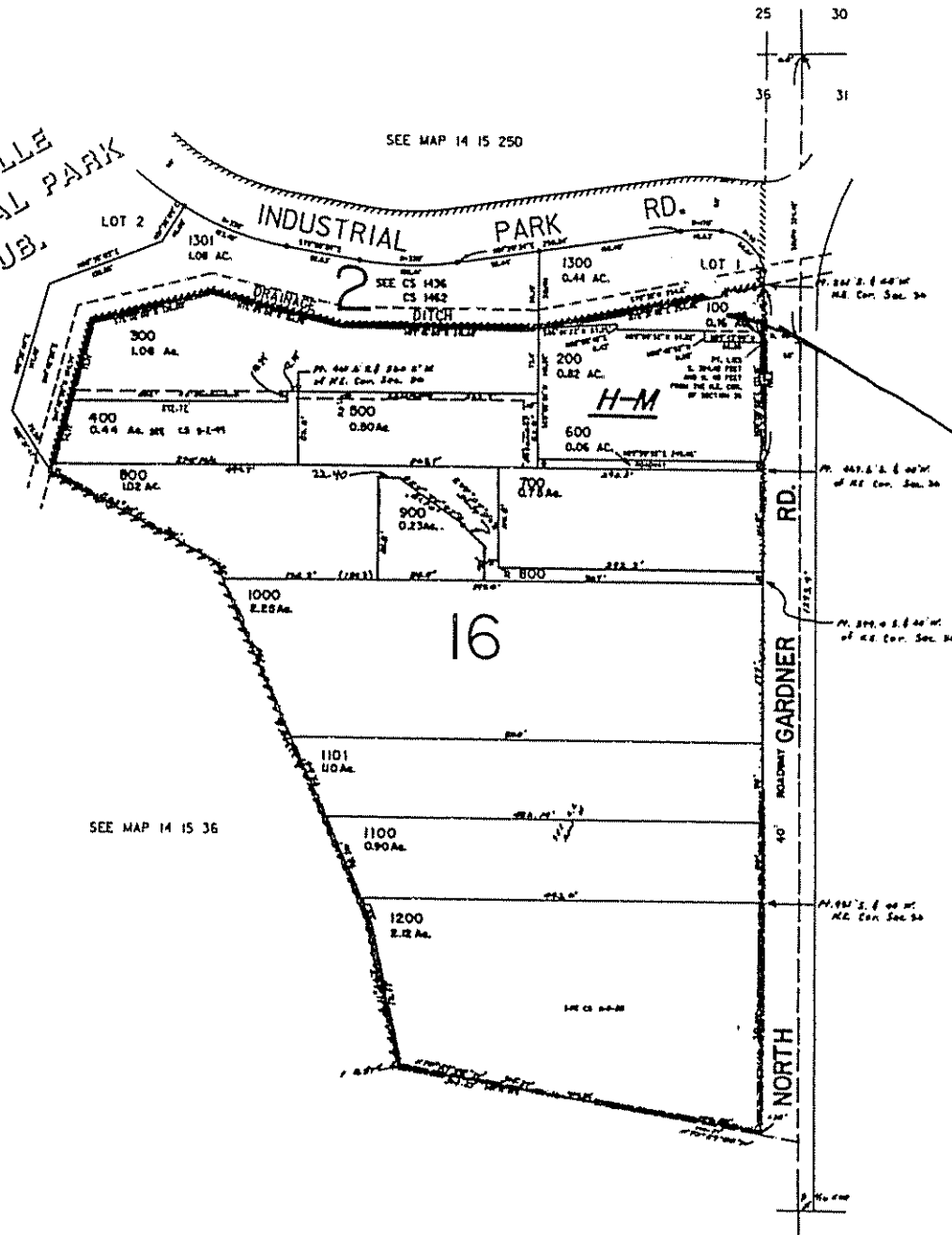
NE1/4 NE1/4 SEC.36 T.14S. R.15E. W.M.
CROOK COUNTY
1" = 100'

14 15 36AA
14 5 36AA

CANCELLED NO.
801
901
1201



PRINEVILLE
INDUSTRIAL PARK
SUB.



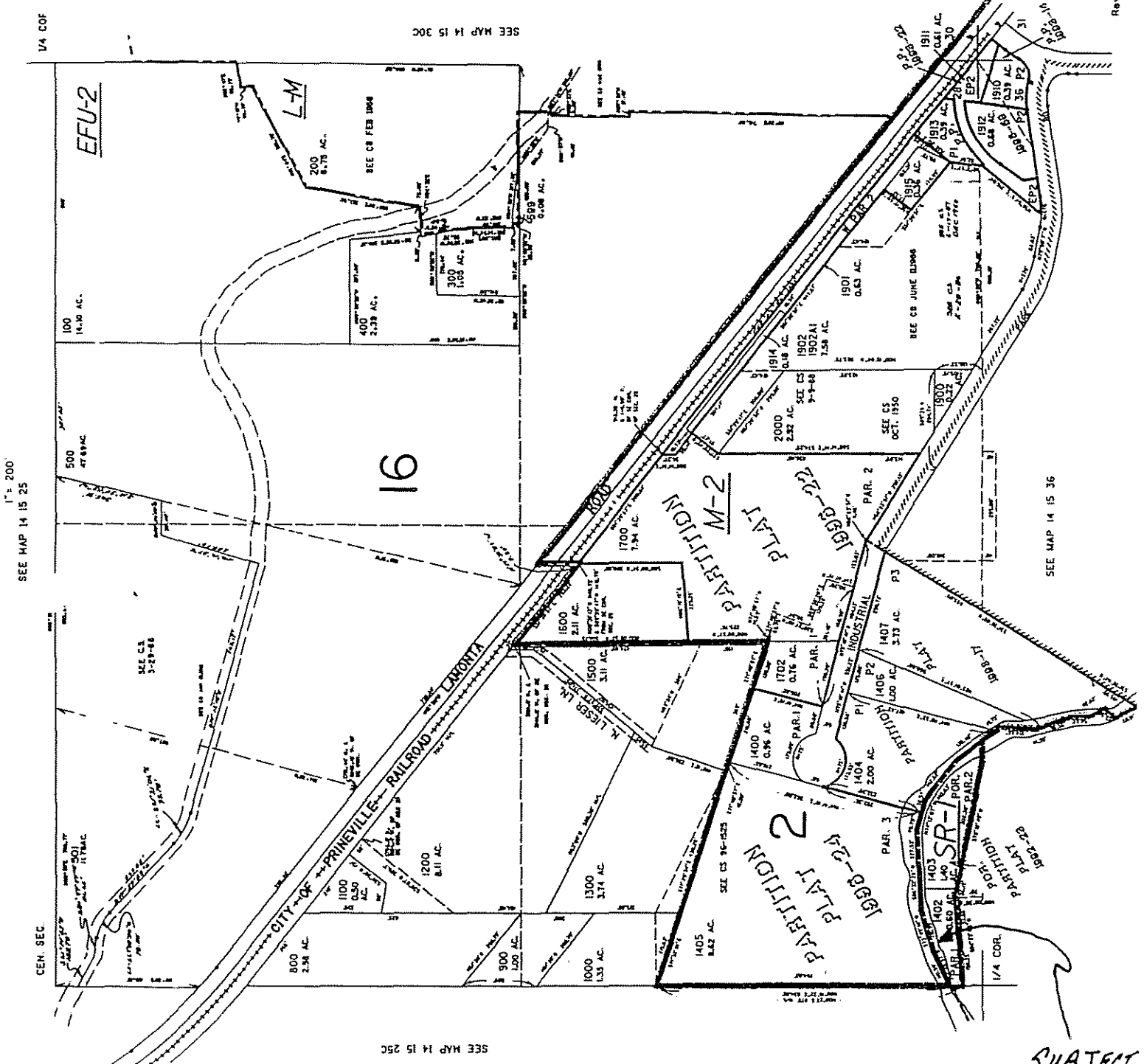
SUBJECT TAX LOT 100
REZONE M-2

EXHIBIT "E"

14 15 36AA
REVISED 11-5-96. CW

1526D
 CANCELLED NO.
 600
 700
 1401
 1701
 1800
 1801
 1903 THRU 1909
 2001
 2100

14 15 25D
 PRINEVILLE
 Revised 02/15/2000. CC



1" = 200'
 SEE MAP 14 15 25

SEE MAP 14 15 25C

SEE MAP 14 15 36

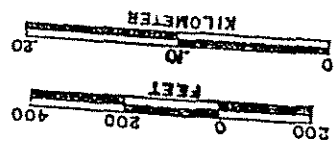
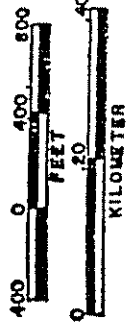


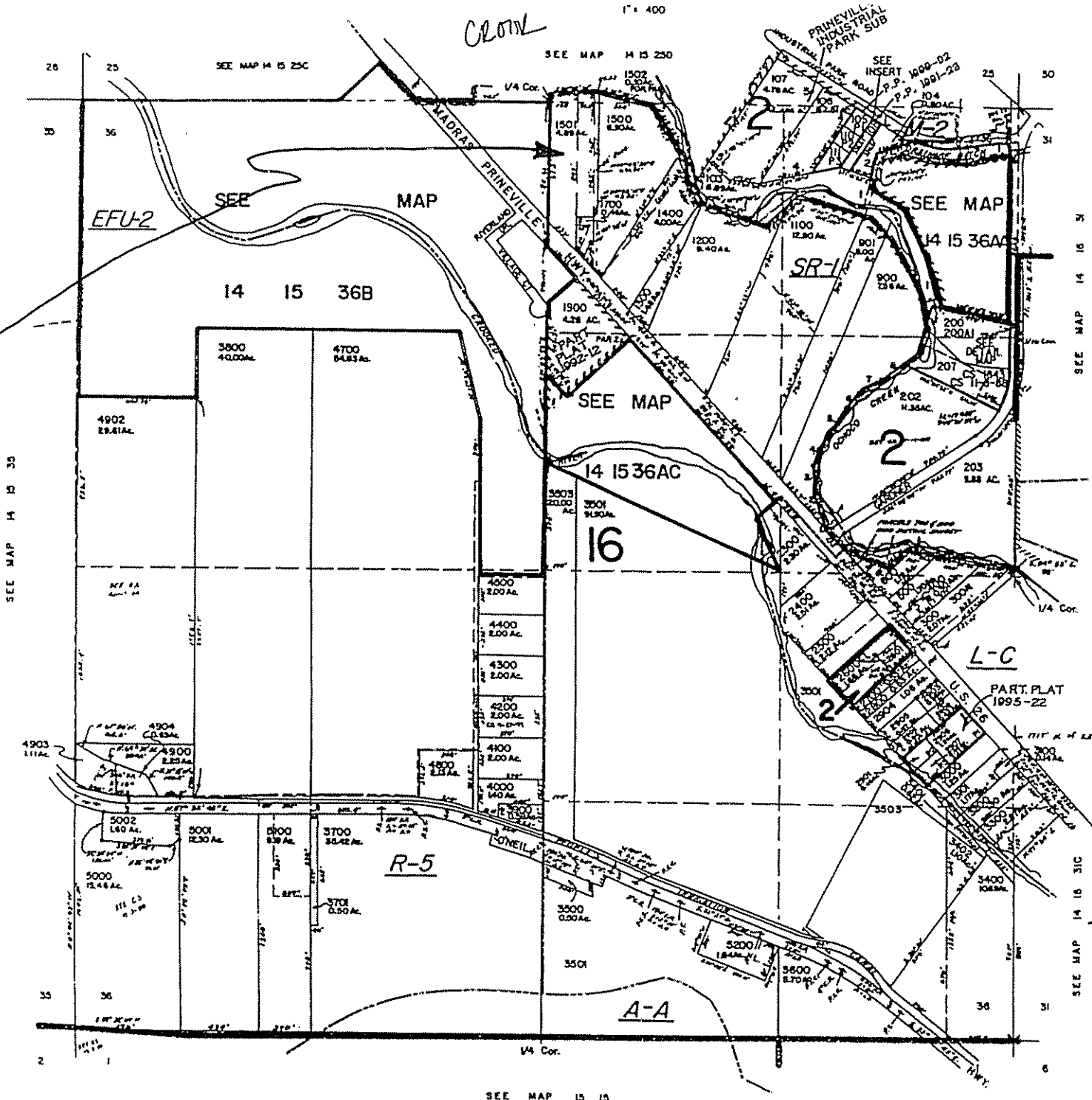
EXHIBIT "F-1"
 SUBJECT TAX LOT 1402
 REZONE R-2

SCALE 1:9600



SUBJECT
TAX LOT 1501
REZONE R-2

EXHIBIT "E-2"

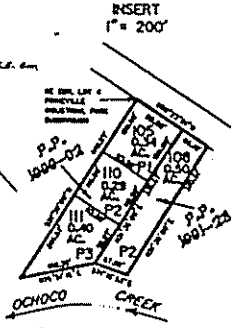


PRINEVILLE

- CANCELLED NO.
- .00
 - 102
 - 109
 - 201
 - 204
 - 205
 - 206
 - 501
 - 1000
 - 1600
 - 1701
 - 1702
 - 1800 THRU 1806
 - 1901
 - 1902
 - 1999
 - 2000
 - 2100
 - 2101
 - 2102
 - 2200
 - 2301
 - 3200A1
 - 3502
 - 3504
 - 3600H THRU 3600J
 - 4600
 - 4601
 - 4602
 - 4901

Numbers of Lots have
Dashed Creek

- 1. 1/4 SECTION 25-04
- 2. 1/4 SECTION 25-05
- 3. 1/4 SECTION 25-06
- 4. 1/4 SECTION 25-07
- 5. 1/4 SECTION 25-08
- 6. 1/4 SECTION 25-09
- 7. 1/4 SECTION 25-10
- 8. 1/4 SECTION 25-11
- 9. 1/4 SECTION 25-12
- 10. 1/4 SECTION 25-13
- 11. 1/4 SECTION 25-14
- 12. 1/4 SECTION 25-15



14 15 36
& INDEX
PRINEVILLE

Revised 01/13/2000, cc